

Implementation of the Water Framework Directive

icpdr iksd

International
Commission
for the Protection
of the Danube River

Internationale
Kommission
zum Schutz
der Donau

The Danube Experience



ICPDR

Philip Weller

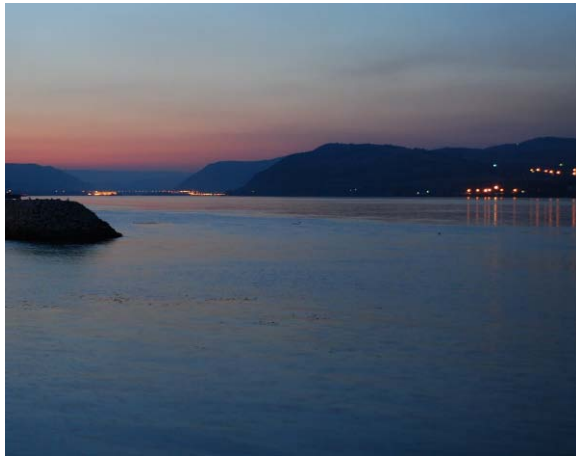
Budapest, 24 March 2011

From Black Forest to Black Sea

icpdr iksd

International
Commission
for the Protection
of the Danube River

Internationale
Kommission
zum Schutz
der Donau





Human activities damaged the Danube

icpdr iksd

International
Commission
for the Protection
of the Danube River

Internationale
Kommission
zum Schutz
der Donau



Danube River Protection Convention



29 June 1994
Sofia - Bulgaria

- Protection of water / ecological resources
- Sustainable use of water in Danube River Basin
- Reduce inputs of nutrients and hazardous substances

Contracting Parties

icpdr iksd

International
Commission
for the Protection
of the Danube River

Internationale
Kommission
zum Schutz
der Donau



Germany



Austria



Czech Republic



Slovakia



Hungary



Slovenia



Croatia



Bosnia & Herzegovina



Serbia



Montenegro



Romania



Bulgaria



Rep. of Moldova



Ukraine



European Union

Implementation of EU WFD



3rd ICPDR Plenary Session 27-28 November 2000, Sofia

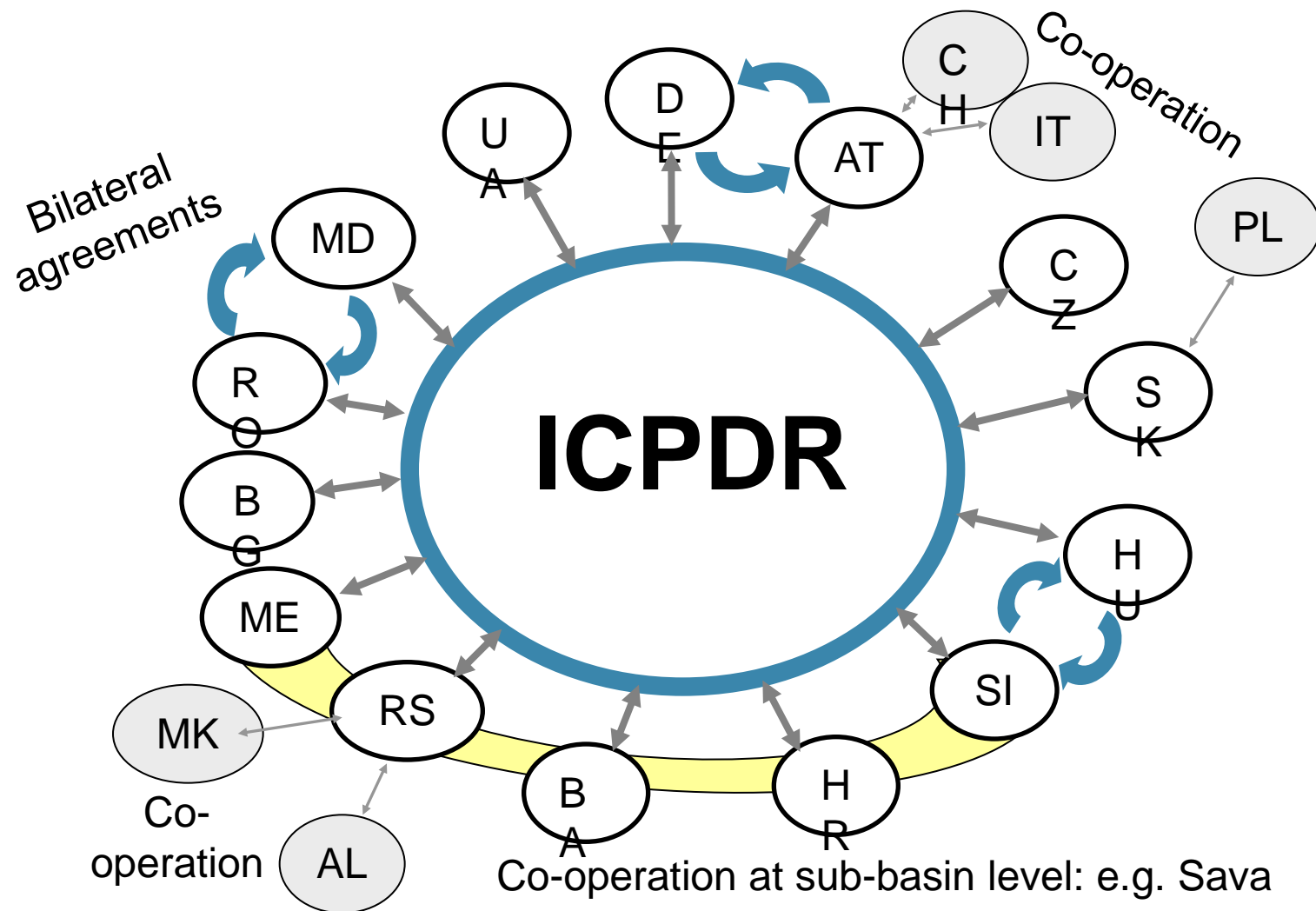
- Implementation of WFD has highest priority for ICPDR
- ICPDR is a platform for coordination
- Contracting Parties will make all efforts to achieve coordinated river basin management plan for DRB

Coordination Mechanisms

icpdr ikisd

International
Commission
for the Protection
of the Danube River

Internationale
Kommission
zum Schutz
der Donau



Stakeholder Involvement: 21 Observers

icpdr ikzd

International
Commission
for the Protection
of the Danube River
Internationale
Kommission
zum Schutz
der Donau

viadonau/



Significant Water Management Issues



Organic
Pollution



Nutrient
Pollution

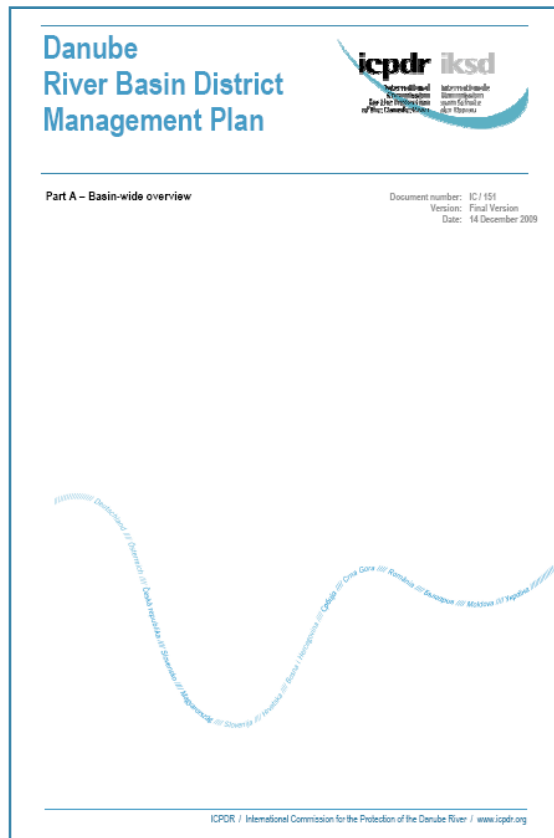


Hazardous
Substances Pollution



Hydromorphological
Alterations

Danube River Basin Management Plan - 2009



Reflects

- Water status of the DRB waters
- Significant Water Management Issues

Includes

- Joint Programme of Measures
- Evaluation on measure implementation

Enables

- Conclusions on investment & funding
- Potential link to Danube Strategy

Joint Program of Measures (JPM)



Heart of DRBM Plan:

- Management objectives for each Significant Water Management Issue
- Measures on basin-wide scale
- Needs for future funding

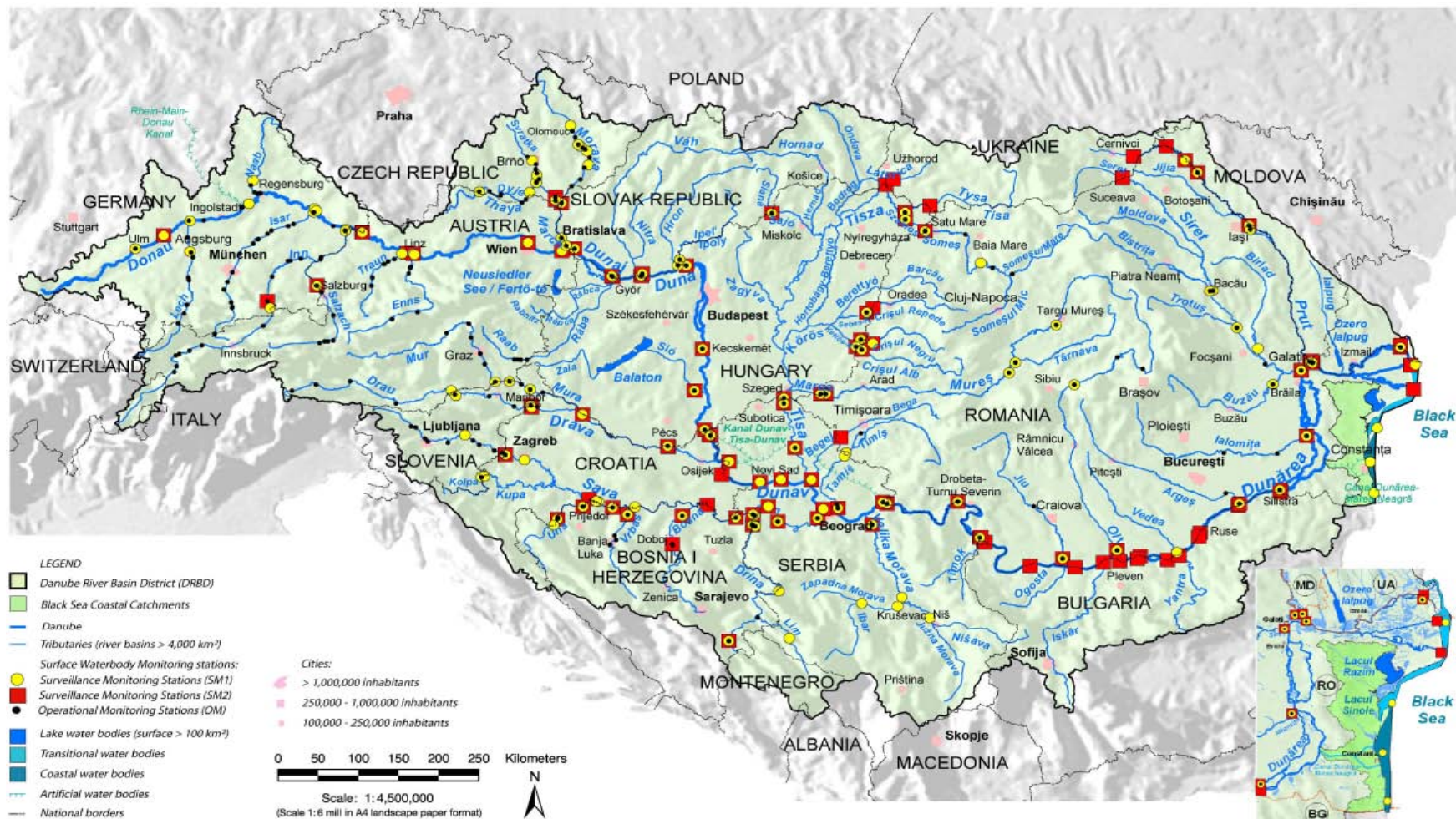
JPM addresses the problems in Danube River Basin

TransNational Monitoring Network (TNMN)

icpdr iksd

International
Commission
for the Protection
of the Danube River

Internationale
Kommission
zum Schutz
der Donau



Case Study: Red Sludge Accident 2010

A levee breach of the sludge reservoir:

- Large amount of industrial red sludge spill
- Loss and injury of human life
- Significant environmental damages

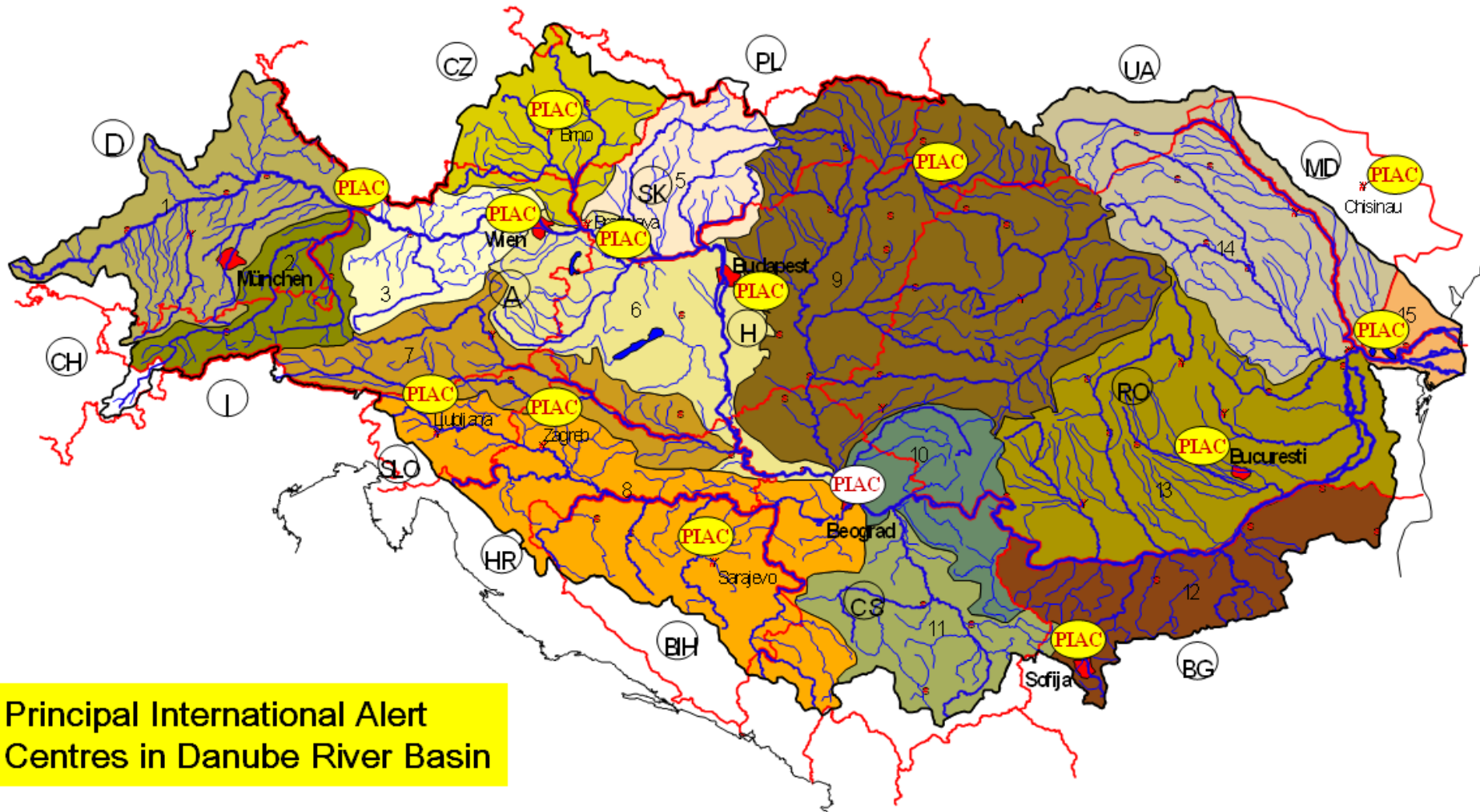


Accident Emergency Warning System

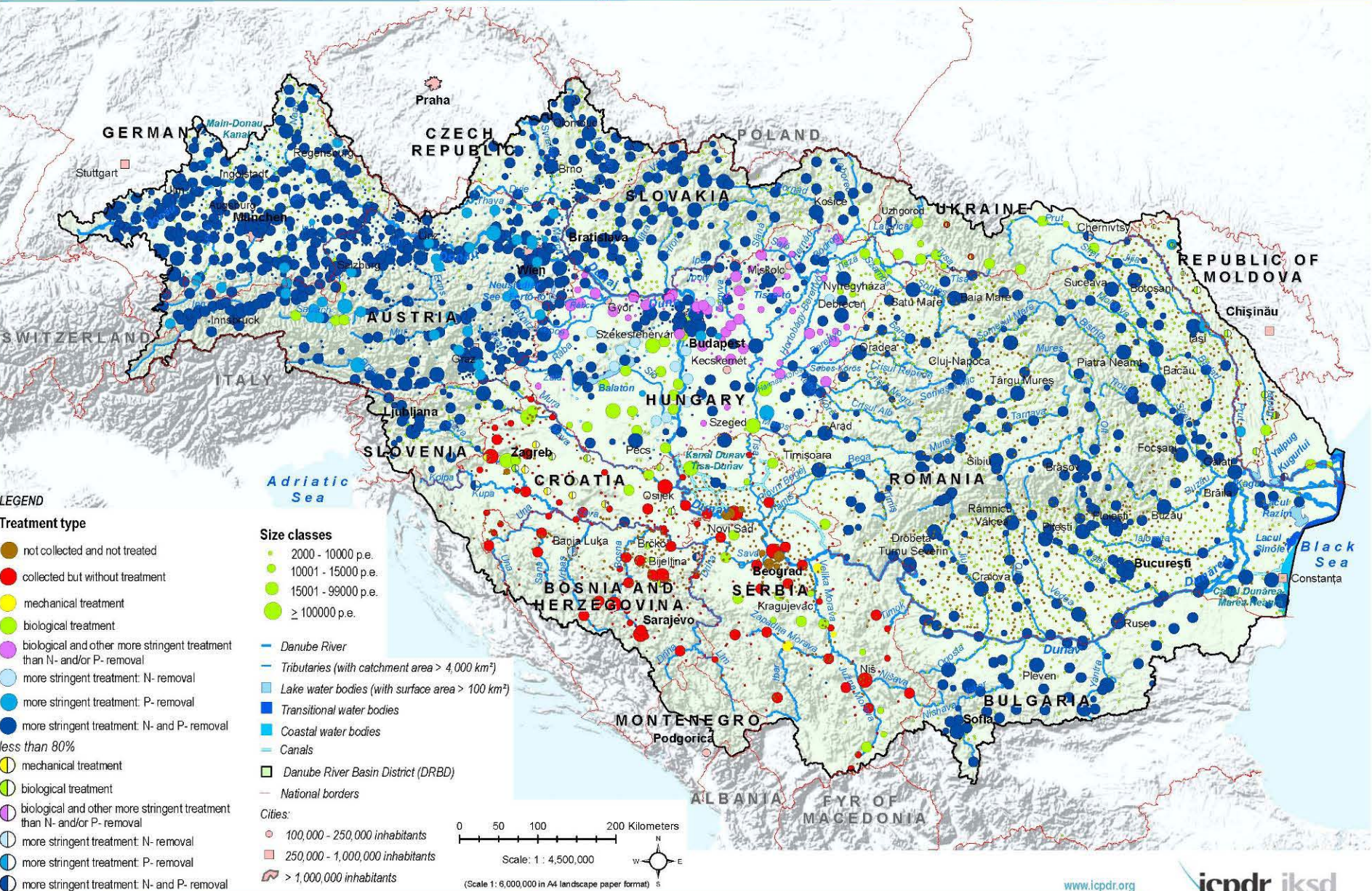
icpdr iksd

International
Commission
for the Protection
of the Danube River

Internationale
Kommission
zum Schutz
der Donau



Principal International Alert
Centres in Danube River Basin



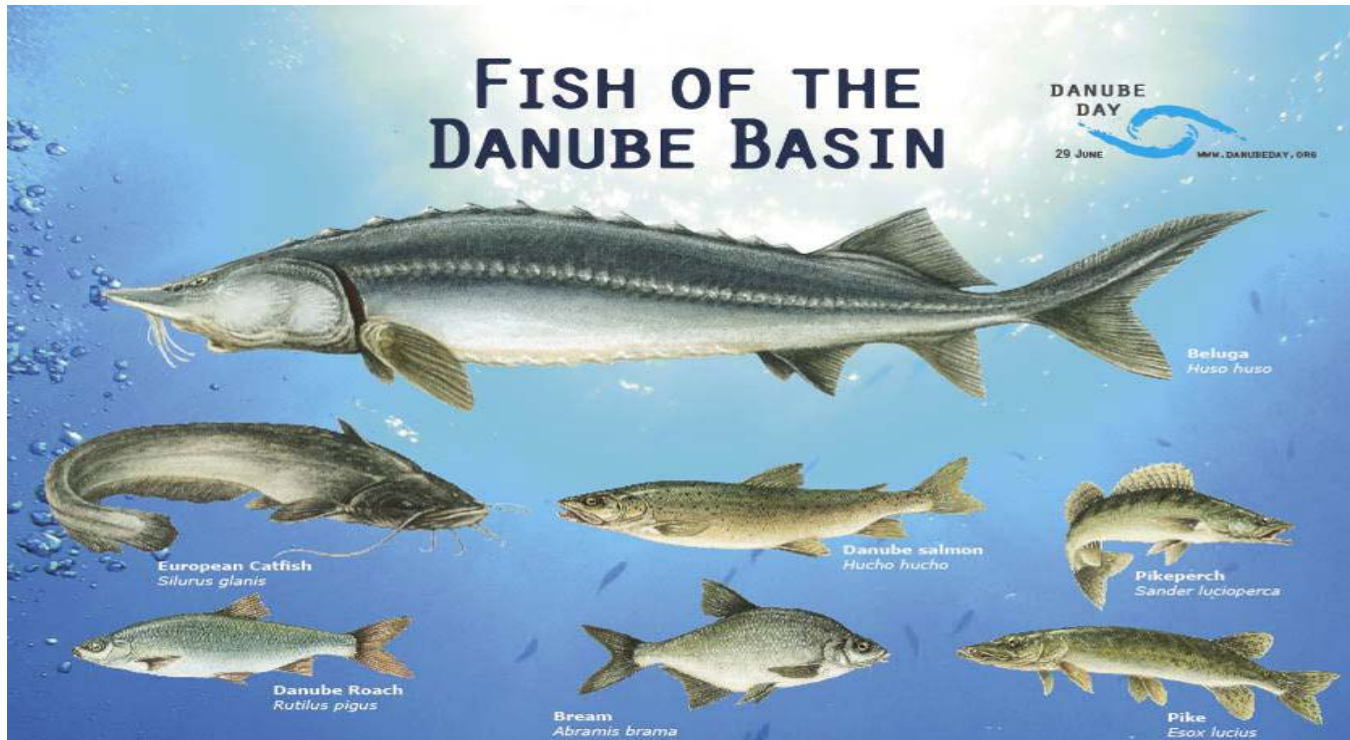
This ICPRD product is based on national information provided by the Contracting Parties to the ICPRD (AT, BA, BG, CZ, DE, HR, HU, MD, RO, RS, SI, SK, UA) and CH, except for the following: EuroGlobeMap v2.1 from EuroGeographics was used for national borders of AT, CZ, DE, HR, HU, MD, RO, SI, SK and UA; ESRI datasets were used for AL, ME, MK; Shuttle Radar Topography Mission (SRTM) from USGS Seamless Data Distribution System was used as topographic layer; data from the European Commission (Joint Research Center) was used for the outer border of the DRBD of AL, IT, ME and PL.

Habitat Continuity

icpdr ikisd

International
Commission
for the Protection
of the Danube River

Internationale
Kommission
zum Schutz
der Donau



Feasibility study on re-opening of Iron Gate Dams

Ministerial Meeting February 16, 2010

icpdr iksd

International
Commission
for the Protection
of the Danube River

Internationale
Kommission
zum Schutz
der Donau



ICPDR MINISTERIAL MEETING
**DANUBE BASIN:
SHARED WATERS -
JOINT RESPONSIBILITIES**
VIENNA, 16 FEBRUARY 2010

icpdr iksd
International
Commission
for the Protection
of the Danube River

Internationale
Kommission
zum Schutz
der Donau

Next Steps

- Full implementation of Joint Programme of Measures
- Climate Change Adaption Strategy
- Sub-basin Management Plans
- Work towards inter-sectoral cooperation



Joint Statement on Navigation

icpdr iksd

International
Commission
for the Protection
of the Danube River

Internationale
Kommission
zum Schutz
der Donau

icpdr iksd

International
Commission
for the Protection
of the Danube River

Internationale
Kommission
zum Schutz
der Donau



icpdr iksd

International
Commission
for the Protection
of the Danube River

Internationale
Kommission
zum Schutz
der Donau

Development of Inland Navigation and Environmental Protection in the Danube River Basin

Joint Statement on Guiding Principles

Inland navigation can contribute to making transport more environmentally sustainable, particularly where it substitutes for road transport. It can, however, also have significant influence on river ecosystems, jeopardizing the goals of the EU Water Framework Directive, which aims for the "good ecological status" of all waters by 2015. Recognising this potential conflict in a number of new waterway projects along the Danube and the Sava river, the International Commission for the Protection of the Danube River (ICPDR) has linked up with the Danube Navigation Commission, and the International Sava River Basin Commission to conduct in 2007 an intense, cross-sectoral discussion process. As a result of 3 interdisciplinary workshops, a "Joint Statement on Guiding Principles on the Development of Inland Navigation and Environmental Protection in the Danube River Basin" was agreed. The final document was adopted in December 2007/January 2008 by the ICPDR, the Danube Commission and by the International Sava River Basin Commission. The "Joint Statement" is a guiding document for the maintenance of existing waterways and the development of future waterway infrastructure. It is perceived as a milestone that leads to the integration of ecology into waterway development.

Deutschland // Österreich // Česká republika // Slovensko // Magyarország // Rumunien // Serbien // Bosnien und Herzegowina // Kroatien // Montenegro // Albanien // Bulgarien // Ukraine // Moldau // Belarus // Russland

Hydropower

Balancing economic
interests...



...with
environmental needs

Agriculture & Land Use

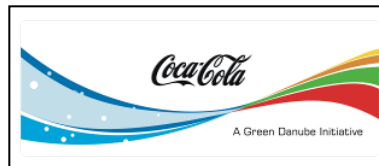


- Nutrients reduction
- Pesticide reduction
- Organic farming
- Soil erosion measures
- Wetlands reconnection

Business Partnership



icpdr **iksd**
International
Commission
for the Protection
of the Danube River
Internationale
Kommission
zum Schutz
der Donau

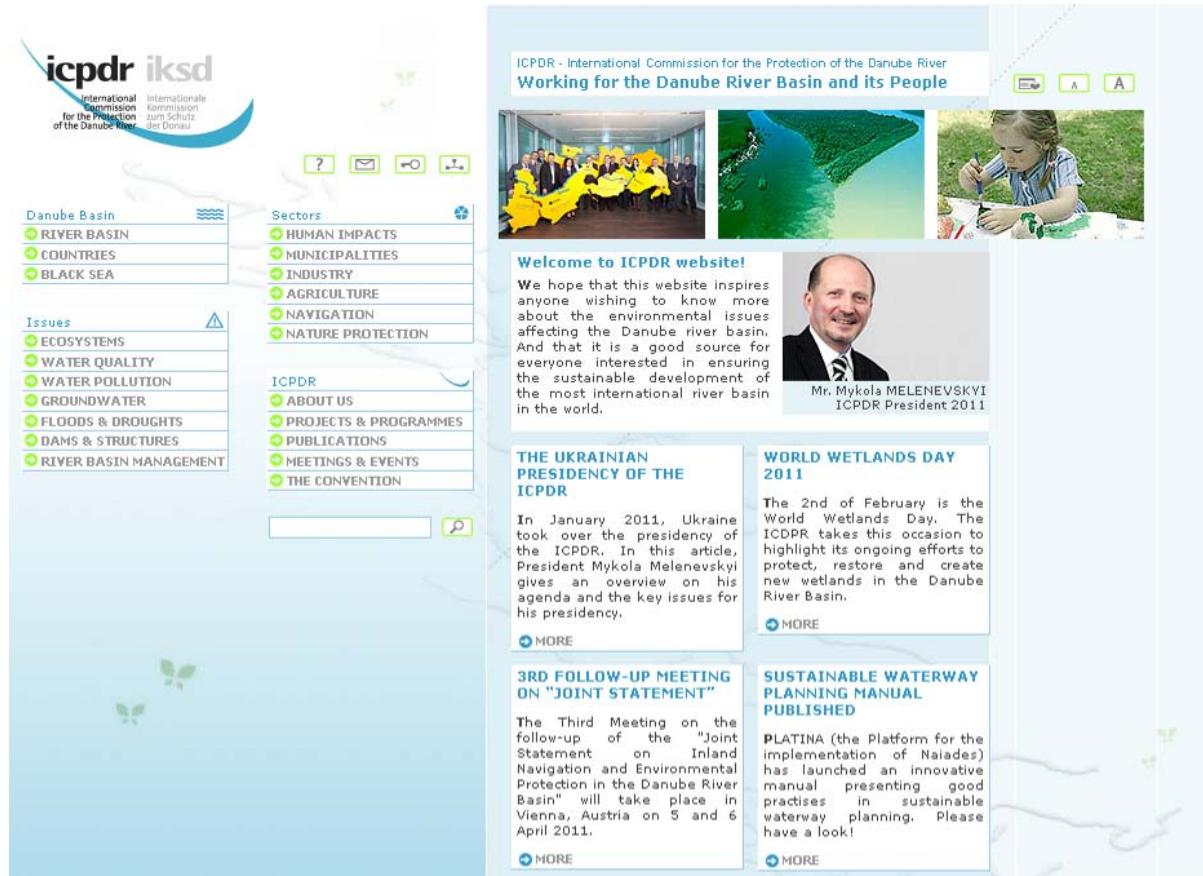


EU Danube Strategy

- High degree of political attention
- New impetus for projects
- Efficient prioritisation



Thank you!



The screenshot shows the ICPDR website homepage. At the top left is the ICPDR/IKSD logo. Below it are navigation menus for 'Danube Basin' (River Basin, Countries, Black Sea) and 'Issues' (Ecosystems, Water Quality, Water Pollution, Groundwater, Floods & Droughts, Dams & Structures, River Basin Management). To the right are 'Sectors' (Human Impacts, Municipalities, Industry, Agriculture, Navigation, Nature Protection) and 'ICPDR' (About Us, Projects & Programmes, Publications, Meetings & Events, The Convention). A search bar is located below these menus. The main content area features a header with the text 'ICPDR - International Commission for the Protection of the Danube River Working for the Danube River Basin and its People'. Below this is a 'Welcome to ICPDR website!' section with a photo of Mr. Mykola MELENEVSKYI, ICPDR President 2011. To the right of the welcome message is a map of the Danube River basin and a photo of a child painting. Below the welcome message are three news articles: 'THE UKRAINIAN PRESIDENCY OF THE ICPDR', 'WORLD WETLANDS DAY 2011', and '3RD FOLLOW-UP MEETING ON "JOINT STATEMENT"', each with a 'MORE' link. To the right of these articles is another news article titled 'SUSTAINABLE WATERWAY PLANNING MANUAL PUBLISHED' with a 'MORE' link.

icpdr iksd
International
Commission
for the Protection
of the Danube River
Internationale
Kommission
zum Schutz
der Donau

Danube Basin

- RIVER BASIN
- COUNTRIES
- BLACK SEA

Issues

- ECOSYSTEMS
- WATER QUALITY
- WATER POLLUTION
- GROUNDWATER
- FLOODS & DROUGHTS
- DAMS & STRUCTURES
- RIVER BASIN MANAGEMENT

Sectors

- HUMAN IMPACTS
- MUNICIPALITIES
- INDUSTRY
- AGRICULTURE
- NAVIGATION
- NATURE PROTECTION

ICPDR

- ABOUT US
- PROJECTS & PROGRAMMES
- PUBLICATIONS
- MEETINGS & EVENTS
- THE CONVENTION

ICPDR - International Commission for the Protection of the Danube River
Working for the Danube River Basin and its People

Welcome to ICPDR website!

We hope that this website inspires anyone wishing to know more about the environmental issues affecting the Danube river basin. And that it is a good source for everyone interested in ensuring the sustainable development of the most international river basin in the world.

Mr. Mykola MELENEVSKYI
ICPDR President 2011

THE UKRAINIAN PRESIDENCY OF THE ICPDR

In January 2011, Ukraine took over the presidency of the ICPDR. In this article, President Mykola Melenevskyi gives an overview on his agenda and the key issues for his presidency.

[MORE](#)

WORLD WETLANDS DAY 2011

The 2nd of February is the World Wetlands Day. The ICPDR takes this occasion to highlight its ongoing efforts to protect, restore and create new wetlands in the Danube River Basin.

[MORE](#)

3RD FOLLOW-UP MEETING ON "JOINT STATEMENT"

The Third Meeting on the follow-up of the "Joint Statement on Inland Navigation and Environmental Protection in the Danube River Basin" will take place in Vienna, Austria on 5 and 6 April 2011.

[MORE](#)

SUSTAINABLE WATERWAY PLANNING MANUAL PUBLISHED

PLATINA (the Platform for the implementation of Naiades) has launched an innovative manual presenting good practises in sustainable waterway planning. Please have a look!

[MORE](#)

Further information: www.icpdr.org